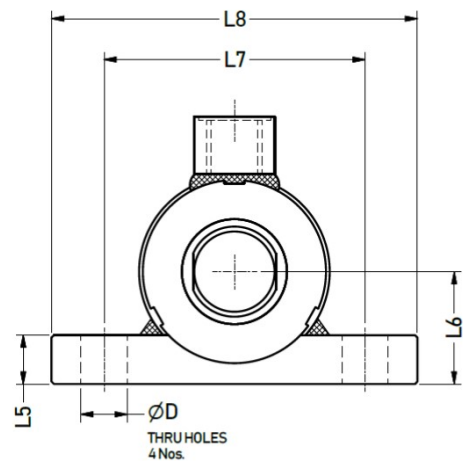
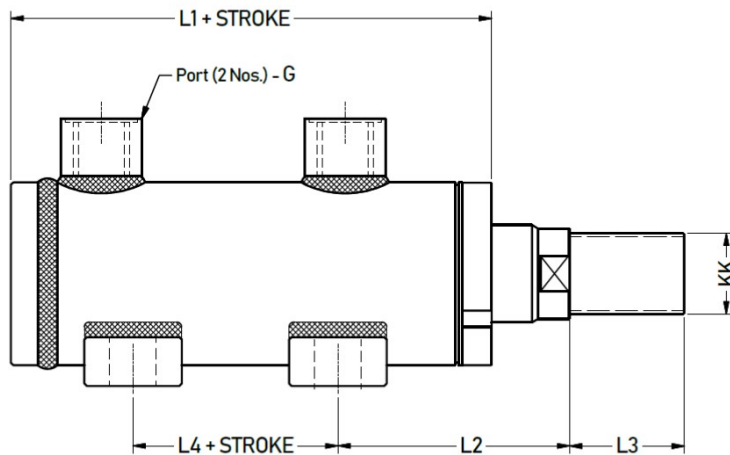


Features

- ❖ Threaded & Welded Type
- ❖ Cost Effective
- ❖ Short Lead Time
- ❖ Low Maintenance
- ❖ Double Acting Cylinder

Technical Details

Available Bore Sizes	∅ 40 / ∅ 50 / ∅ 63 / ∅ 80 / ∅ 100
Maximum Working Pressure	240 bar
Hydraulic Oil	Mineral Oil (HL / HLP)
Materials of Construction	CDS Tube Grade ST52 / C45 / En8
Temperature Range	-10 to +90°C



Installation Dimensions & Specifications :

BORE DIA.	ROD DIA.	L1	L2	L3	L4	L5	L6	L7	L8	KK	D	G (BSP)	Max. Load Carrying Capacity (metric ton)		Genuine Seal Kit Part No.
													Push	Pull	
40	25	133	81	24	36	20	35	72	100	M20 x 1.5	13	3/8"	3.0	1.8	RX1601-Z
50	30	137	82	24	34	20	40	90	120	M24 x 2.0	13	1/2"	4.7	3.0	RX1602-Z
63	40	147	95	47	34	20	46	109	150	M33 x 2.0	17	1/2"	7.5	4.5	RX1603-Z
80	45	153	99	47	36	25	58	123	164	M33 x 2.0	17	1/2"	12.1	8.2	RX1604-Z
100	56	172	114	58	39	25	68	145	190	M42 x 2.0	21	3/4"	18.9	13.0	RX1605-Z

* Stroke Tolerance : ± 1.5mm [for strokes 50 to 400 mm] & ±2.0mm [for strokes 401 to 1000 mm]

* Higher bore sizes and /or longer strokes are available upon request.

* All dimensions are in mm unless otherwise specified.

* Single Acting Option available.

Ordering Instructions for RWI Compact Cylinder :

R W 7 — —

MODEL No.
Both End Foot
Mounted

CYLINDER BORE (mm)
Standard Bores available :
040 / 050 / 063 / 080 / 100

STROKE (mm)
Standard Strokes available :
50 mm to 1000 mm (in 5 mm increments)

Example: For a cylinder of Bore ∅ 63mm & Stroke 900 mm the order code shall be : **RW7-063-0900**

1 Mounting Style :

Rod End Mountings -

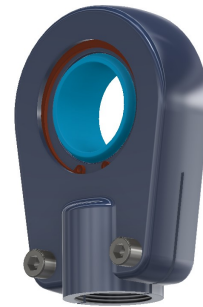
- 5 different standard styles of mounting as shown below
- Browse through subsequent pages for technical details and mounting dimensions



RXPC [Plain Clevis]



RXFC [Fork Clevis]



RXSR [Self Aligning Clevis - Short]

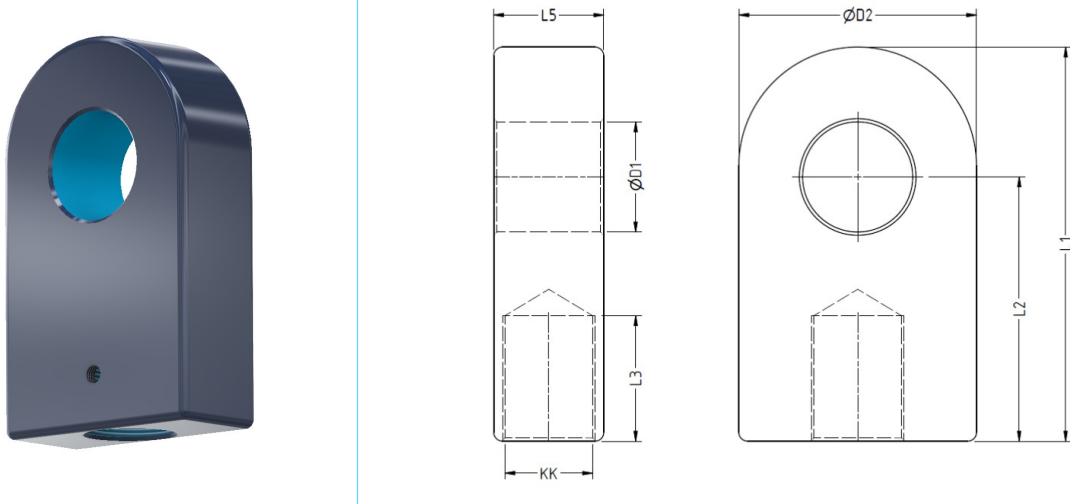


RXLR [Self Aligning Clevis - Long]



RXLR [Self Aligning Clevis - Long]

2 Plain Clevis :



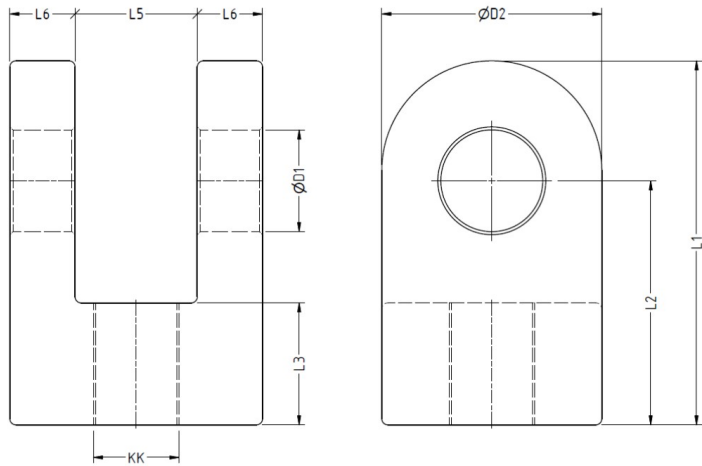
Installation Dimensions :

PART NUMBER	DIMENSIONS						
	D1	D2	KK (6H)	L1	L2	L3	L5
RXPC16	16	40	M12X1.5	64	44	19	16
RXPC20	20	47	M16X1.5	77	52	23	20
RXPC25	25	58	M20X1.5	96	65	29	25
RXPC32	32	70	M27X2	118	80	37	32
RXPC40	40	89	M33X2	145.5	97	46	40
RXPC50	50	108	M42X2	179	120	57	50
RXPC63	63	132	M48X2	211	140	64	63
RXPC80	80	168	M64X3	270	180	86	80
RXPC90	90	185	M72X3	296	195	91	90
RXPC100	100	210	M80X3	322	210	96	100
RXPC110	110	235	M90X3	364	235	106	110
RXPC125	125	262	M100X3	405	260	113	125
RXPC160	160	326	M125X3	488	310	126	160
RXPC200	200	418	M160X4	620	390	161	200
RXPC250	250	590	M200X4	845	520	200	250

All dimensions are in mm .

NOTE: For Left Hand thread, add suffix – “L” to Part Number. Example: RXPC110-L

3 Fork Clevis :



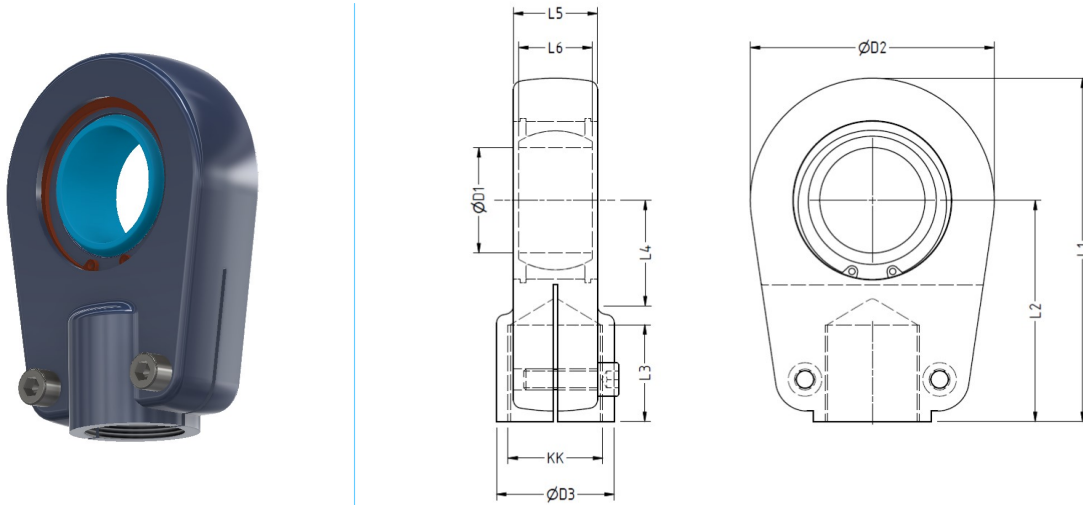
Installation Dimensions :

PART NUMBER	DIMENSIONS							
	D1	D2	KK (6H)	L1	L2	L3	L5	L6
RXFC16	16	40	M12X1.5	64	44	20	20	13
RXFC20	20	47	M16X1.5	77	52	25	30	16
RXFC25	25	58	M20X1.5	96	65	30	30	16
RXFC32	32	70	M27X2	118	80	40	40	19
RXFC40	40	89	M33X2	145.5	97	48	50	25
RXFC50	50	108	M42X2	179	120	60	60	32
RXFC63	63	132	M48X2	211	140	70	70	32
RXFC80	80	168	M64X3	270	180	90	70	32
RXFC90	90	185	M72X3	296	195	95	80	35
RXFC100	100	210	M80X3	322	210	100	80	35
RXFC110	110	235	M90X3	364	235	-	-	-
RXFC125	125	262	M100X3	405	260	-	-	-
RXFC160	160	326	M125X3	488	310	-	-	-
RXFC200	200	418	M160X4	620	390	-	-	-
RXFC250	250	590	M200X4	845	520	-	-	-

All dimensions are in mm .

NOTE: For Left Hand thread, add suffix – “L” to Part Number. Example: RXFC110-L

4 Self Aligning Clevis - Short :



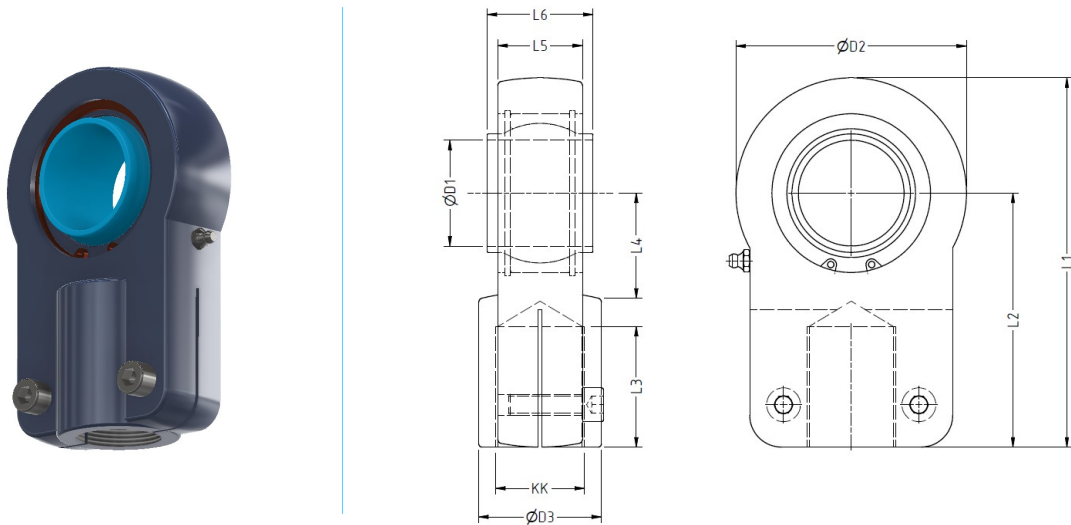
Installation Dimensions & Specifications :

PART NUMBER	DIMENSIONS										LOAD RATING (kN)		WEIGHT (kg)
	D1	D2	D3	KK (6H)	L1	L2	L3	L4	L5	L6	Dynamic	Static	
RXSR20	20	56	25	M16X1.5	80	50	17	25	19	16	30	81	0.44
RXSR25	25	56	25	M16X1.5	80	50	17	25	23	20	48	72	0.47
RXSR30	30	64	32	M22X1.5	94	60	23	30	28	22	62	106	0.77
RXSR35	35	78	40	M28X1.5	112	70	29	38	30	25	79	153	1.24
RXSR40	40	94	49	M35X1.5	135	85	36	45	35	28	99	250	2.12
RXSR50	50	116	61	M45X1.5	168	105	45	55	40	35	156	365	3.74
RXSR60	60	130	75	M58X1.5	200	130	59	65	50	44	245	400	6.49
RXSR70	70	154	86	M65X1.5	232	150	66	75	55	49	313	540	9.88
RXSR80	80	176	105	M80X2	265	170	81	80	60	55	400	670	14.2
RXSR90	90	206	124	M100X2	323	210	101	90	65	60	488	980	23.5
RXSR100	100	231	138	M110X2	360	235	111	105	70	70	607	1120	32.14
RXSR110	110	266	152	M120X3	407	265	125	115	80	70	654	1700	47.6
RXSR120	120	340	172	M130X3	490	310	135	140	90	85	950	2900	72

All dimensions are in mm .

NOTE: For Left Hand thread, add suffix – “L” to Part Number. Example: RXLR110-L

5 Self Aligning Clevis - Long :



Installation Dimensions & Specifications :

PART NUMBER	DIMENSIONS										LOAD RATING (kN)		WEIGHT (kg)
	D1	D2	D3	KK (6H)	L1	L2	L3	L4	L5	L6	Dynamic	Static	
RXLR12	12	32	16	M12x1.25	54	38	17	14	11	12	10	24.5	0.11
RXLR16	16	40	21	M14x1.5	64	44	19	18	14	16	17	36.5	0.20
RXLR20	20	47	25	M16x1.5	77	52	23	22	17	20	30	48	0.35
RXLR25	25	58	30	M20x1.5	96	65	29	27	22	25	48	78	0.62
RXLR32	32	71	38	M27x2	118.5	80	42	32	28	32	65	114	1.15
RXLR40	40	90	47	M33x2	146	97	52.5	41	33	40	99	204	2.18
RXLR50	50	109	58	M42x2	179.5	120	63.5	50	40	50	156	310	3.96
RXLR63	63	136	70	M48x2	211	140	72	62	53	63	253	430	6.23
RXLR70	70	155	80	M56x2	245	160	84	70	57	70	313	540	11.1
RXLR80	80	170	90	M64x3	270	180	92.5	78	67	80	400	695	15.1
RXLR90	90	185	100	M72x3	296	195	103	85	72	90	488	750	19.1
RXLR100	100	211	110	M80x3	322.5	210	108	98	85	100	607	1060	25.5
RXLR110	110	235	125	M90x3	364	235	118	105	88	110	654	1200	36.6
RXLR125	125	265	135	M100x3	405	260	125	120	103	125	950	1430	52.6
RXLR160	160	326	165	M125x4	488	310	138	150	130	160	1360	2200	79
RXLR200	200	418	215	M160x4	620	390	173	195	162	200	2120	3650	164

All dimensions are in mm .

NOTE: For Left Hand thread, add suffix – “L” to Part Number. Example: RXLR110-L