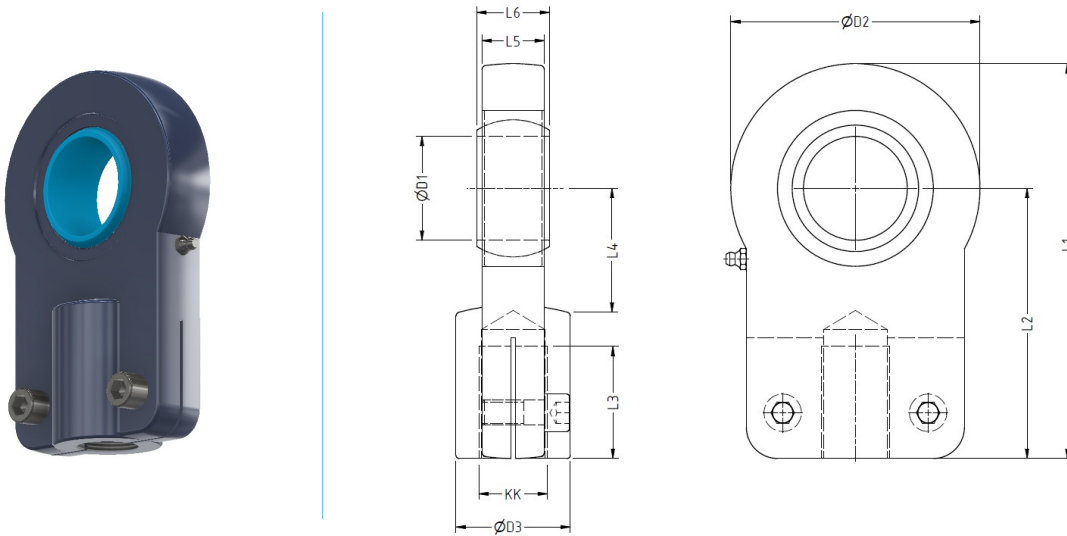


6 Self Aligning Clevis - Long :



Installation Dimensions & Specifications :

PART NUMBER	DIMENSIONS										LOAD RATING (kN)		WEIGHT (kg)
	D1	D2	D3	KK (6H)	L1	L2	L3	L4	L5	L6	Dynamic	Static	
RXLR12	12	35	17	M10x1.25	59.5	42	15	16	8	10	10	17	0.12
RXLR16	16	45	21	M12x1.25	70.5	48	17	20	11	14	21	28.5	0.22
RXLR20	20	55	25	M14x1.5	85.5	58	19	25	13	16	30	42.5	0.43
RXLR25	25	65	30	M16x1.5	100.5	68	23	30	17	20	48	67	0.67
RXLR30	30	80	36	M20x1.5	125	85	29	35	19	22	62	108	1.25
RXLR40	40	100	45	M27x2	155	105	37	45	23	28	99	156	2.16
RXLR50	50	120	55	M33x2	190	130	54	58	30	35	156	245	3.90
RXLR60	60	160	68	M42x2	230	150	65	68	38	44	245	380	8.2
RXLR80	80	205	90	M48x2	287.5	185	75	92	47	55	400	585	16.2
RXLR100	100	240	110	M64x3	360	240	102	116	57	70	607	865	28.4

All dimensions are in mm .

NOTE: For Left Hand thread, add suffix – “L” to Part Number. Example: RXLR110-L